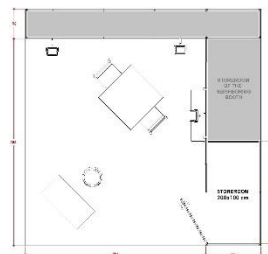


view 16 sqm



floorplan 16 mq

A 16 sqm package includes*:

STRUCTURE

Green carpet on floor with nylon protection sheet
Grey fabric boundary walls H cm 300 ('Cover Up' system)
Storeroom cm 200x100 with lockable leaf door

ELECTRICAL EQUIPMENT

Nr. 1 multi socket 220V inside the storeroom
Nr. 3 LED spotlights 30W

GRAPHICS

Nr. 1 sign cm 199x30 with Exhibitor's name in black Arial lettering

FURNITURE

Nr. 1 white square table cm 90x90
Nr. 2 white chairs
Nr. 3 shelves cm 100x30 put up on built-in racks**
Nr. 1 counter cm 100x46x100H
Nr. 1 stool
Nr. 1 coat stand
Nr. 1 waste basket

PLEASE NOTE that, depending on the actual space assigned, the layout above may be slightly different (storeroom in inner corner position).

NOTES ABOUT THE SUPPLIES

*The equipment above gets increased by multiples of 16 sqm.

**Shelves put up at cm 110-140-170 cm above ground. Maximum load allowed on each shelf: 5 kg.

The shelves cannot be moved onsite: to get them placed in a different position or removed, please email allestimenti@bfservizi.it no later than September 18°.

It is allowed to fix items weighing up to 10 kg onto the walls only with the hooks and wires available for rental as extra on befair.bolognafiere.it.

It is possible to leave out all or some items by notifying it to allestimenti@bfservizi.it within September 18° - no replacements or price reduction allowed..

Carpet color change and extra furniture can be ordered on befair.bolognafiere.it within September 18° – late orders will be subject to availability and a 20% surcharge will be applied.

IMPORTANT SAFETY NOTES AND REGULATIONS

It is not allowed to fix monitors onto the walls: they must lie on its floor stand (monitors and floor stands are available for rental on befair.bolognafiere.it).

It is strictly forbidden to add live loads to all pre-fitted booths.

It is forbidden to use any tool or device that may ruin the panels and/or their coating - any damage will be priced and charged after the exhibition.